

QUALITY



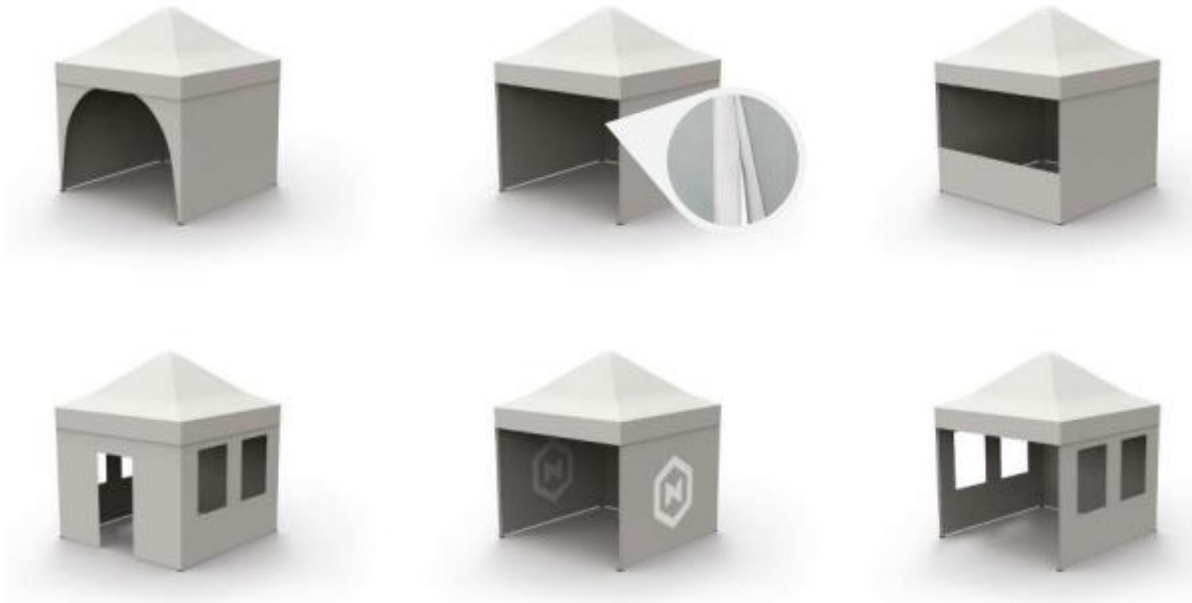
A rich basic colours palette of the sheathing



We use a water repellent fabric with a weight of 235 g/m².

Wall types



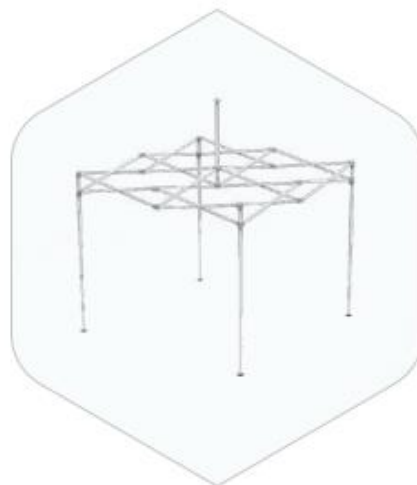


Hexagon profiles

Thanks to the profiles made of durable aluminum, the structure of the tent is more stable than in the case of typical rectangular profiles. The hexagonal shape ensures proper fit and form of the tent's construction.

Cross-frame construction

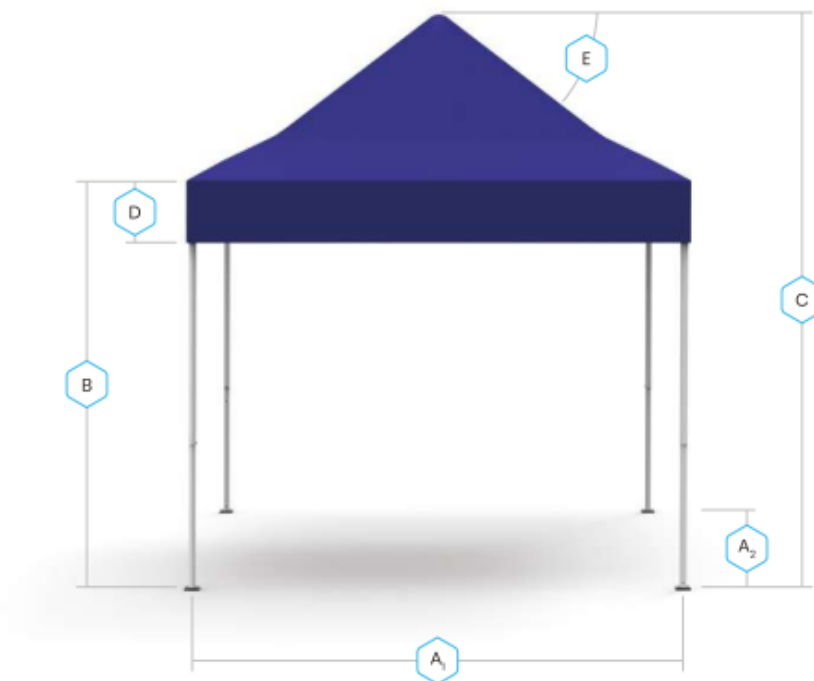
The modern frame has been created with the thought of strength and ease of use. Precisely made elements of the structure allow swift operating and ensure durability and safety.



Sizes

	2 x 2	2 x 3	2 x 4	2,5 x 2,5	3 x 3	3 x 4,5	3 x 6	4 x 4
A ₁ [mm]	2070	2070	2070	2550	3050	3050	3050	4030
A ₂ [mm]	2070	3050	4000	2550	3050	4540	6000	4030
B [mm]	2260-2460	2260-2460	2260-2460	2260-2460	2260-2460	2260-2460	2260-2460	2260-2460
C [mm]	2860-3060	2860-3060	2860-3060	3100-3300	3260-3460	3260-3460	3260-3460	3680-3880
D [mm]	330	330	330	330	330	330	330	330
E	30°	30°	30°	30°	30°	30°	30°	30°
Tent weight*	- 17,5 kg	- 21,5 kg	- 25,0 kg	- 19,0 kg	- 21,0 kg	- 25,5 kg	- 28,7 kg	- 24,0 kg

* (frame + roof canopy)



7

Accessories

	Accessories	Standard	Plus
Accessories included	Set of pins	•	•
	Stripes	•	•
	Standard protective cover		•

Accessories included



Pins



Stripes

Transportation bags and covers



Standard protective cover

Optional accessories	LED Lighting	•	•
	Universal bar 2 m / 2,5 m	•	
	Universal bar 3 m / 4 m / 4,5 m	•	•
	Aluminum counter fixed to the frame 2 m / 2,5 m	•	
	Aluminum counter fixed to the frame 3 m / 4 m / 4,5 m	•	•
	Infrared heater Infra 2000 + PRO	•	•
	Universal connector	•	•
	Tent's legs connector	•	•
	Flag holder	•	•
	Concrete base in a form of a roll, single 16 kg	•	•
	Cast iron base 20 kg	•	•
	Cast iron base with bag 20 kg	•	•
	Sandbag (empty) 20 kg	•	•
	Sandbag (empty) 30 kg	•	•
	Rain gutter 2 m / 2,5 m	•	
	Rain gutter 3 m / 4 m / 4,5 m / 6 m	•	•
	Rain gutter 8 m		•
	Standard protective cover	•	
	Transportation wheels 2 pcs.		•
	Premium bag with transportation wheels		•
	Weight rod for tent's wall		•
	Sealing of the canopy		•
Aluminum curtain pole		•	

Types of bases and weights



Concrete base



Cast iron base with bag



Cast iron base



Sandbag

Additional accessories



Aluminum counter



Rain gutter



Lighting



Radiator 500 W



Universal bar,



Tent's leg connector



Cable organiser



Flag holder

Verschillen

QUALITY

QUALITY PLUS

Frame	aluminum frame with hexagonal profiles, silver colour	aluminum frame with hexagonal profiles, champagne colour
Frame connectors	grey; polypropylene with high resistance to mechanical damage	black; polypropylene / polyamide composite reinforced with glass fiber, with increased impact resistance
Legs locking system	latch	blocker
Canopy	water repellent (PN-EN ISO 4920)	water repellent (PN-EN ISO 4920)
Width of the valance	330 mm	390 mm
Walls connected by	velcro	zip
Walls attached to the frame legs by	velcro	strap with grommet
Warranty for frame connectors	2 years	lifetime
Warranty for tent foots	2 years	lifetime
Warranty for the frame	2 years	5 years